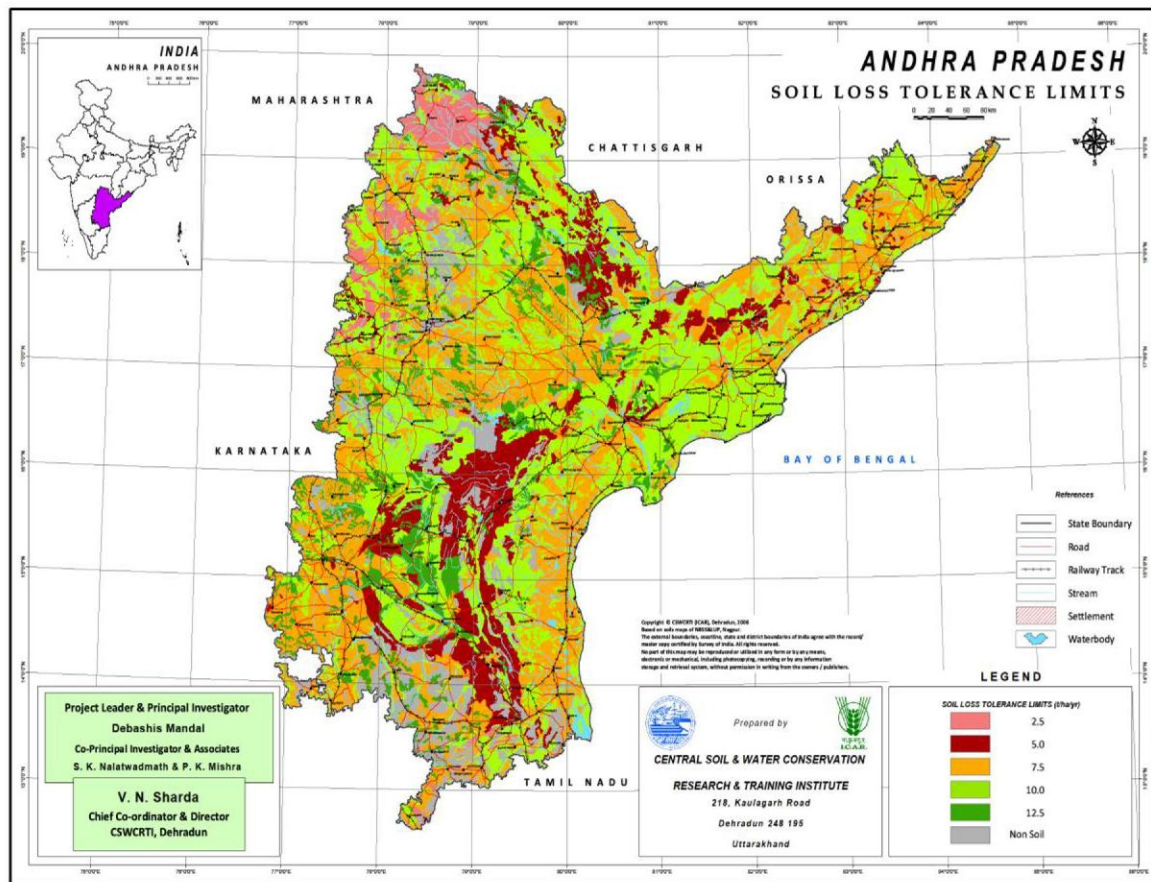


# SLTL MAP OF ANDHRA PRADESH



Districts	Area (M ha)	Soil depth (cm)	SLTL (Mg ha <sup>-1</sup> yr <sup>-1</sup> )
Adilabad, Nizamabad, Medak and Rangareddy (W)	1.18 (4.30)		2.5
adilabad, Mahbubnagar (E-S), Kurnool (C), Anantapur (E), Chittoor (N), Cuddapah, Prakasam (W) Guntur (W-S), Warangal (N-E), Khammam (C) and East Godavari (E-W)	4.14 (15.05)	25-50	5
Adilabad, Nizamabad, Karimnagar, Medak, Rangareddy, Mahbubnagar, Kurnool (W), Anantapur, Chittoor, Cuddapah (E), Prakasam (E), Guntur (E-S), Nalgonda, Warangal (C), Khammam (E&N), Krishna (C), West Godavari (E), East Godavari, Vishakhapatnum, Vizianagaram (C&N), Srikakulam (E) and Nellore	9.17 (33.35)	25-100	7.5
Adilabad, Nizamabad, Karimnagar, Medak, Rangareddy, Mahbubnagar, Kurnool (E&N), Anantapur (E), Chittoor, Cudapah, Prakasam, Guntur, Nalgonda, Warangal (N-W), Khammam (C), Krishna, West Godavari, East Godavari, Vishakhapatnum, Vizianagaram, Srikakulam (W) and Nellore	9.91 (36.03)	100-150	10
Rangareddy (C), Kurnool (E), Cuddapah (W), Warangal and Krishna (S)	2.27 (8.25)	>150	12.5
Rock outcrop/ unreported area	0.83 (3.02)	-	-

