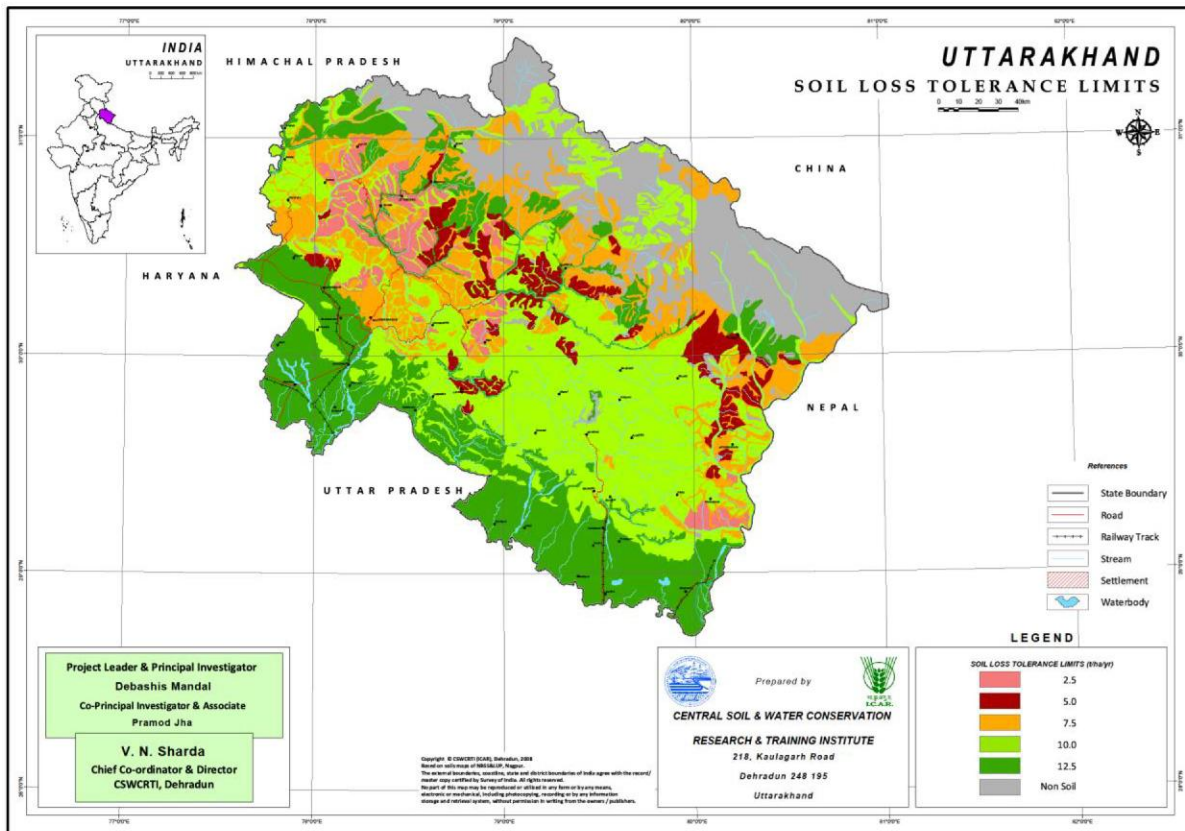


SLTL MAP OF UTTARAKHAND



Districts	Area (M ha)	Soil depth (cm)	SLTL ($Mg\ ha^{-1}\ yr^{-1}$)
Uttarkashi (S), Tehri Garhwak, Rudraprayag and Champawat €	0.21 (3.92)	<25	2.5
Uttarkashi (S), Tehri Garhwal (N-E), Rudraprayag (S-W) and Bageshwar €	0.25 (4.66)	25-50	5
Uttarkashi, Dehradun (S), Garhwal (N), Tehri Garhwal, Rudraprayag (N), Chamoli(S), Pithoragarh (S) and Bageshwar (N)	0.83 (15.48)	<25-50	7.5
Uttrakashi (N), Dehradun (S-E), Haridwar (N), Garwal, Tehri Garhwal (S-W), Rudraprayag (S), Bageshwar (S), Almora, Champawat and Nainital (N)	1.81 (33.77)	50-100	10
Uttarkashi (N), Dehradun (S-W), Haridwar, Garhwal (S), Pithoragarh, Bageshwar, Almora, Nainital (S) and Udham Singh Ngar	1.29 (24.07)	>100	12.5
Rock putcrop/ unreported area	0.97 (18.10)	-	-

