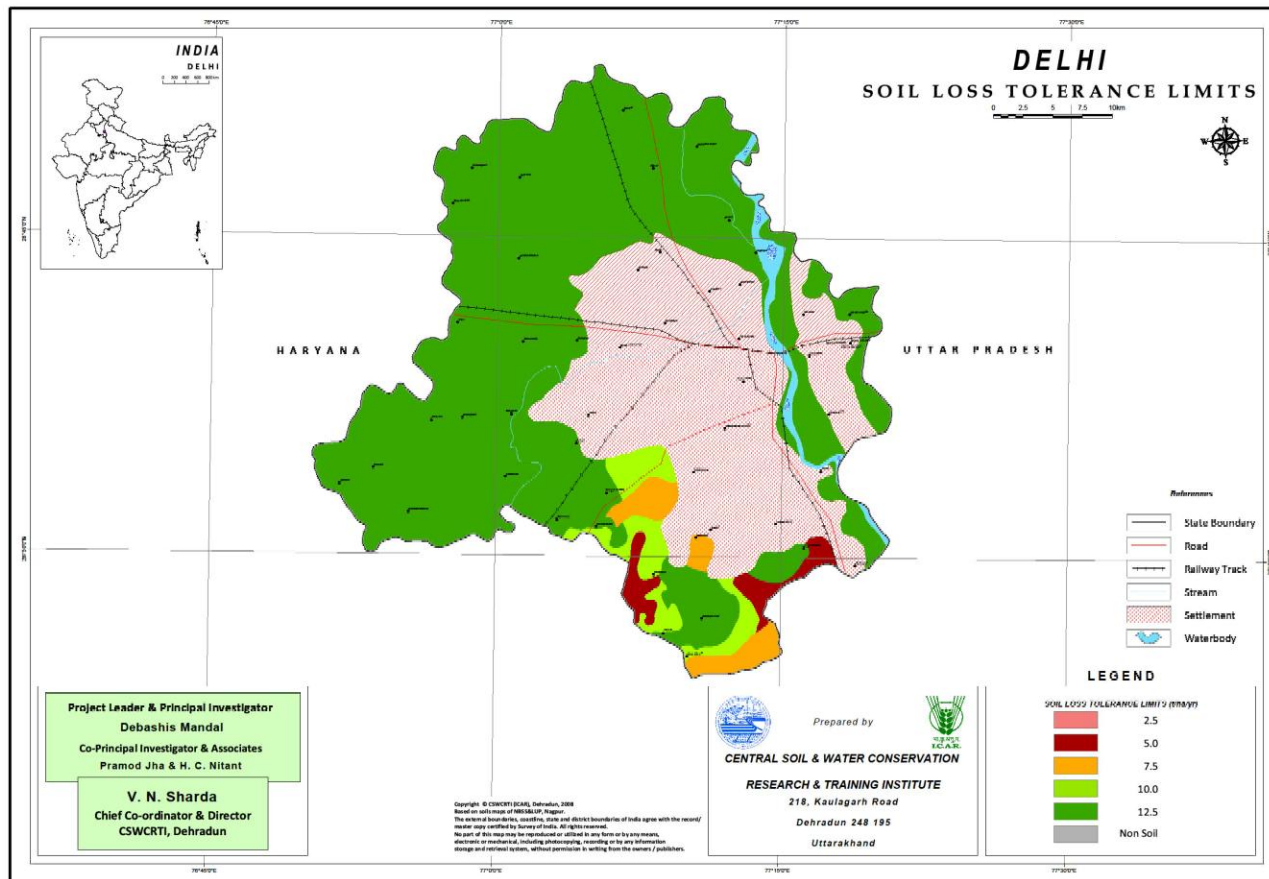


# SLTL MAP OF DELHI



Districts	Area (M ha)	Soil depth (cm)	SLTL (Mg ha <sup>-1</sup> yr <sup>-1</sup> )
South(E&W)	0.002	25-50	5
South(C&S)	0.004 (2.56)	50-75	7.5
South(S)	0.010 (6.41)	75-100	10
East (E&W), North East, North West, West and South West	0.09	>100	12.5
Rock outcrop/ unreported area	0.050 (32.05)	-	-

