

70°0'0"E 72°0'0"E 74°0'0"E 76°0'0"E 78°0'0"E 80°0'0"E

JAMMU & KASHMIR PRIORITY CLASSES FOR EROSION CONTROL

0 50 100 150 200 km



36°0'0"N

34°0'0"N

32°0'0"N

36°0'0"N

34°0'0"N

32°0'0"N

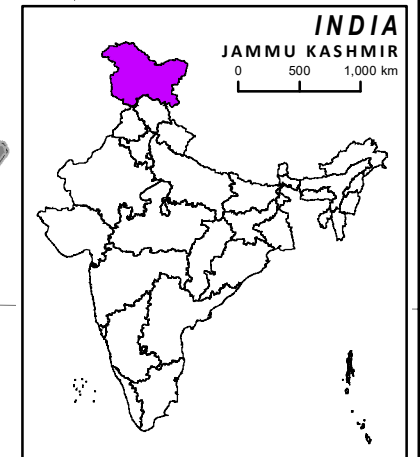
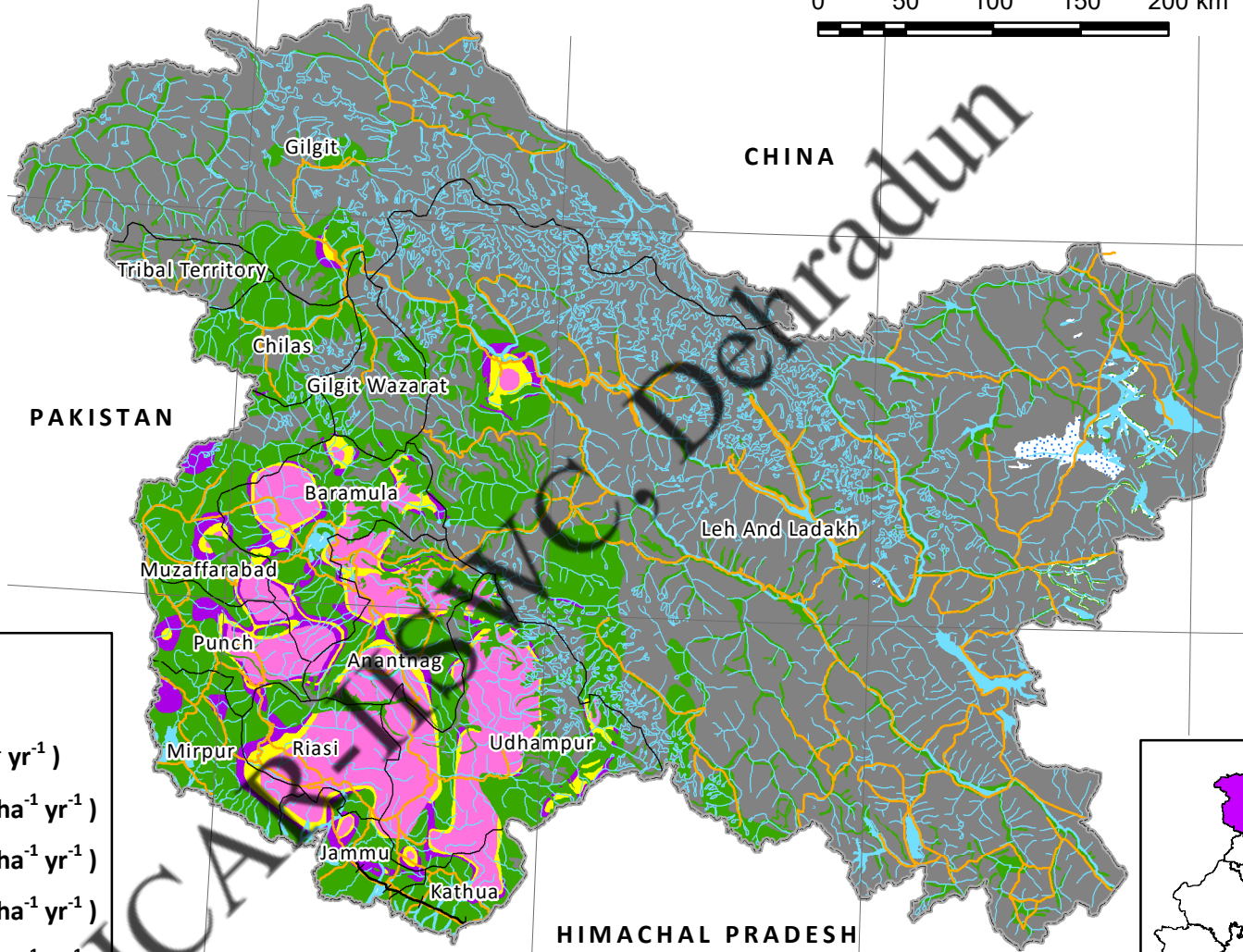
References

- State Boundary
- District Boundary
- Road
- Railway Track
- Stream
- Settlement
- Waterbody
- River Sand/ Sand Bar

LEGEND

PRIORITY CLASS

- CLASS - 1 ($> 35 \text{ t ha}^{-1} \text{ yr}^{-1}$)
- CLASS - 2 ($25 - 35 \text{ t ha}^{-1} \text{ yr}^{-1}$)
- CLASS - 3 ($15 - 25 \text{ t ha}^{-1} \text{ yr}^{-1}$)
- CLASS - 4 ($5 - 15 \text{ t ha}^{-1} \text{ yr}^{-1}$)
- CLASS - 5 ($0 - 5 \text{ t ha}^{-1} \text{ yr}^{-1}$)
- CLASS - 6 NO TREATMENT
- CLASS - 7 Non Soil
- Not Mapped



72°0'0"E 74°0'0"E 76°0'0"E 78°0'0"E 80°0'0"E