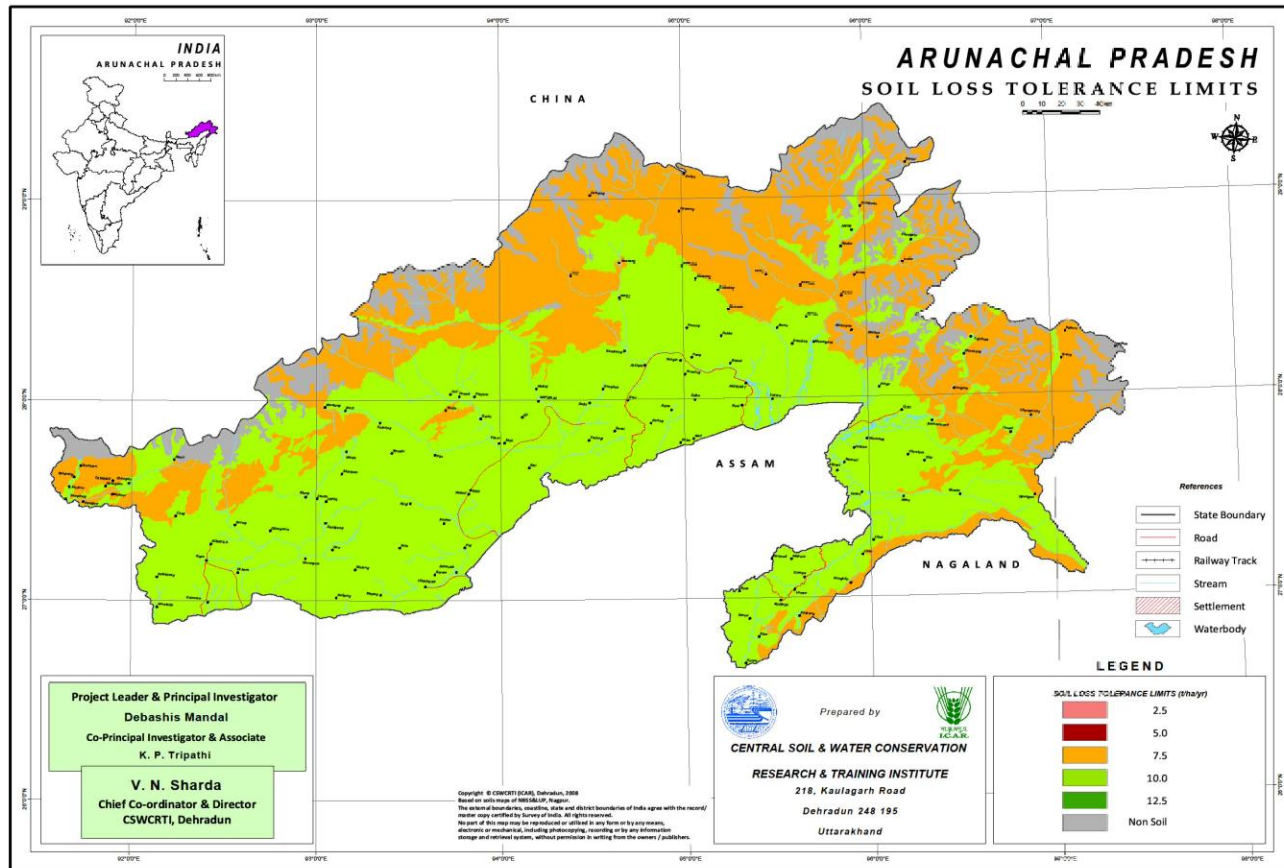


# SLTL MAP OF ARUNACHAL PRADESH



Districts	Area (M ha)	Soil depth (cm)	SLTL (Mg ha <sup>-1</sup> yr <sup>-1</sup> )
Tawang, West Kameng (N-W), East Kameng (E-W), Upper Subansiri (N), West Siang (N), Upper Siang, Lower Dibang Valley (N-E), Lohit (N-E), Changlang (E-S), Tirap (E-S), Kurung Kumei (N) and Anjan	2.71 (32.38)	25-50	7.5
Tawang (N&S), West Kameng, East Kameng, Papumpare, Lower Subansiri, Upper Subansiri, West Siang, East Siang, Upper Siang (S), Lower Dibang Valley, Lohit, Changlang, Tirap, Dibang Valley (C) and Kurung Kumei	4.72 (56.39)	50-100	10
Rock outcrop/unreported area	0.94 (11.23)	-	-

