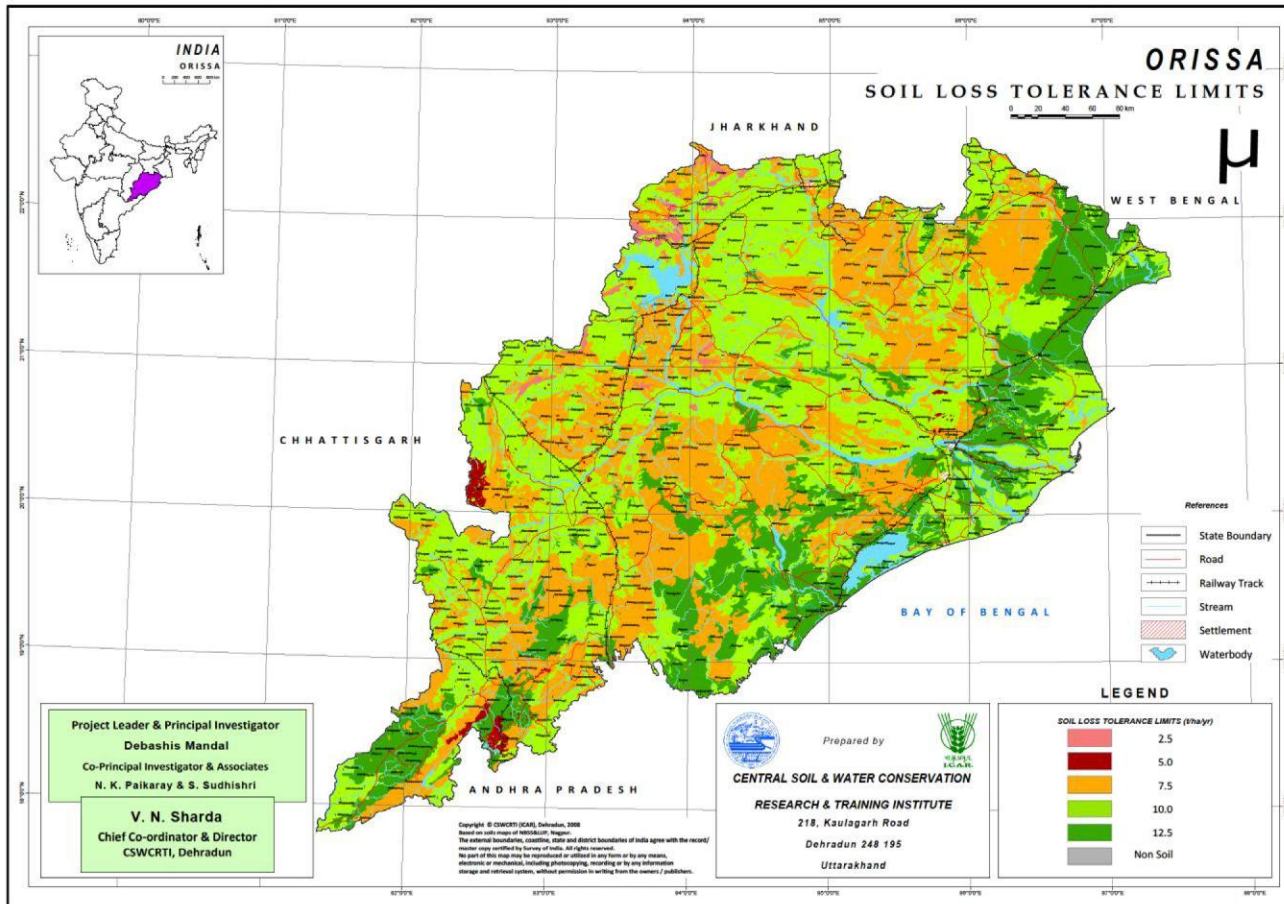


SLTL MAP OF ORISSA



| Districts | Area (M ha) | Soil depth (cm) | SLTL (Mg ha ⁻¹ yr ⁻¹) |
|---|--------------|-----------------|--|
| Sonepur, Bargarh (W) and Jharsuguda (W) | 0.13 (0.83) | <25 | 2.5 |
| Balangir, Nawapara (S-W), Koraput (S&W), Jharsuguda (W) and Sundargarh (N-E) | 0.26 (1.67) | 25-50 | 5 |
| Mayurbhanj, Kedrapara (N), Jagatsinghpur, Jeypore (S), Cuttack, Khurda, Puri €, Nayagarh, Ganjam (S), Gajapati (N-S), Phulbani, Baudh (S&W), Sonepur (W), Bargarh (N), Balangir, Nawapara, Kalahandi, Nawranpur (N), Koraput, Malkangiri (S), Rayagada (N), Jhasuguda (E), Sundargarh, Sambalpur, Deogarh, Angul (W), Keonjhar and Dhenkanal(N) | 7.49 (48.11) | 50-100 | 7.5 |
| Mayurbhanj, Balasore, Bhadrak, Kendrapera, Jagat Singhpur, Jeypur, Cuttack €, Khurda (N), Puri, Nayagarh, Ganjam, Gajapati, Phulbani(S), Baudh, Sonepur, Bargarh, Bolangir, Nawapara (N), Kalahandi, Nawrangpur, Koraput (S), Malkangiri, Rayegada, Jharsuguda, Sundargarh, Sambalpur, Deogarh, Angul, Keonjhar (N-E) and Dhenkanal (E-W) | 5.83 (37.44) | 100-150 | 10 |
| Mayurbhanj, Balasore €, Bhadrak, Jagatsinghpur, Jeypur (N), Nayagarh, Ganjam (N-E), Gajapat (S), Baudh (N), Koraput (S), Malkangiri and Rayagada (W) | 1.44 (9.25) | >150 | 12.5 |
| Rock outcrop/ unreported area | 0.42 (2.70) | - | - |

