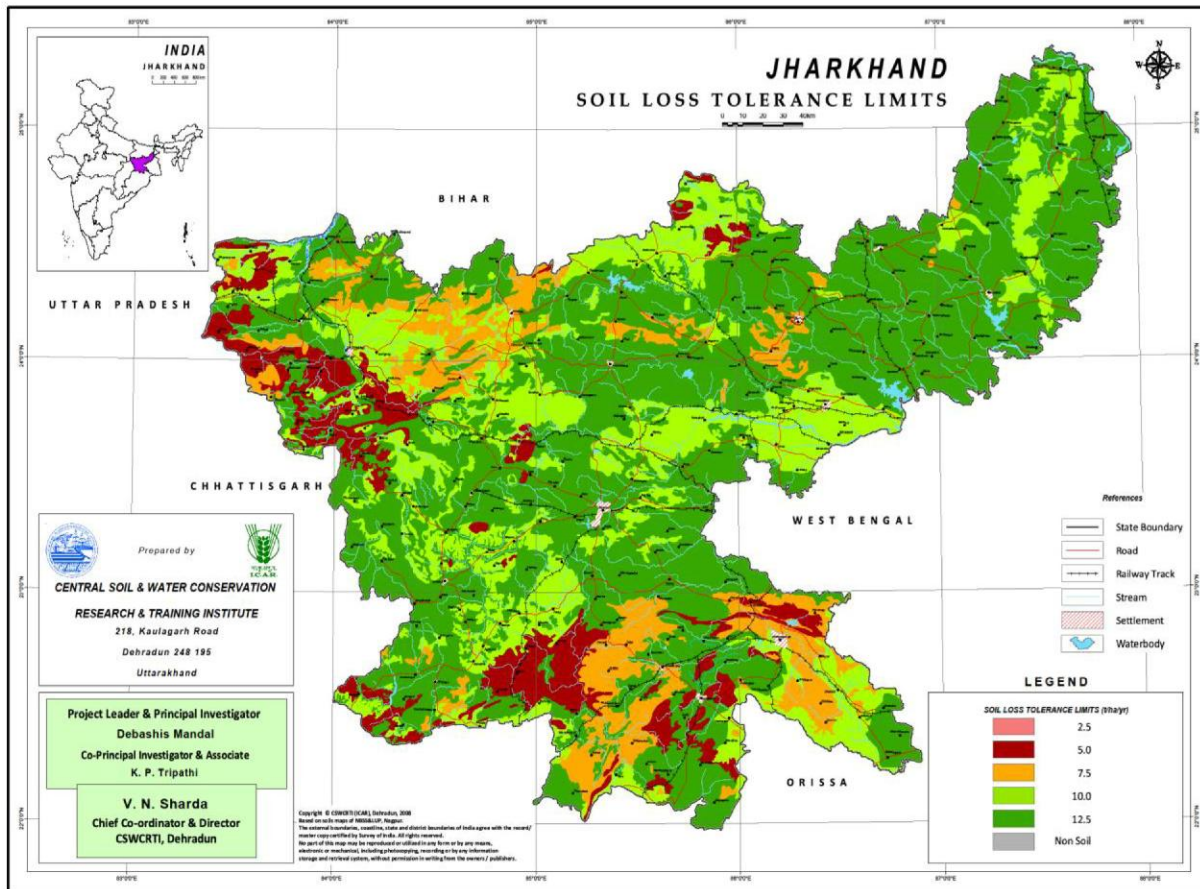


SLTL MAP OF JHARKHAND



Districts	Area (M ha)	Soil depth (cm)	SLTL (Mg ha ⁻¹ yr ⁻¹)
Saraikela, West Singhbhum (E&W), Palamau (W), Garhwa (W-S) and Gumia, Simdelega	0.67 (8.40)	25-50	5
Saraikela, West Singhbhum (C), East Singhbhum (C), Chatra and Palamau	0.81 (10.15)	25-100	7.5
Sahibganj (C), Godda (E), Pakaur (W), Giridih (N), Dhanbad, Koderma (N), Bokaro(E-W), Hazaribagh (N&S), Ranchi, East Singhbhum (E&S), Lohardaga, Palamau (N-E), Garhwa (N) and Gumla	1.80 (22.55)	100-150	10
Sahibganj, Godda, Pakaur, Deogarh, Dumka, Giridih, Dhanbad (E&S), Koderma (S), Bokaro (N&S), Hazaribagh (E-W), Saraikela, West Singhbhum (E), Saraikela, West Singhbhum (E-W), Chatra (N), Lohardaga, Palamau (N-S), Garhwa (N) and Gumla	4.60 (57.65)	>150	12.5

