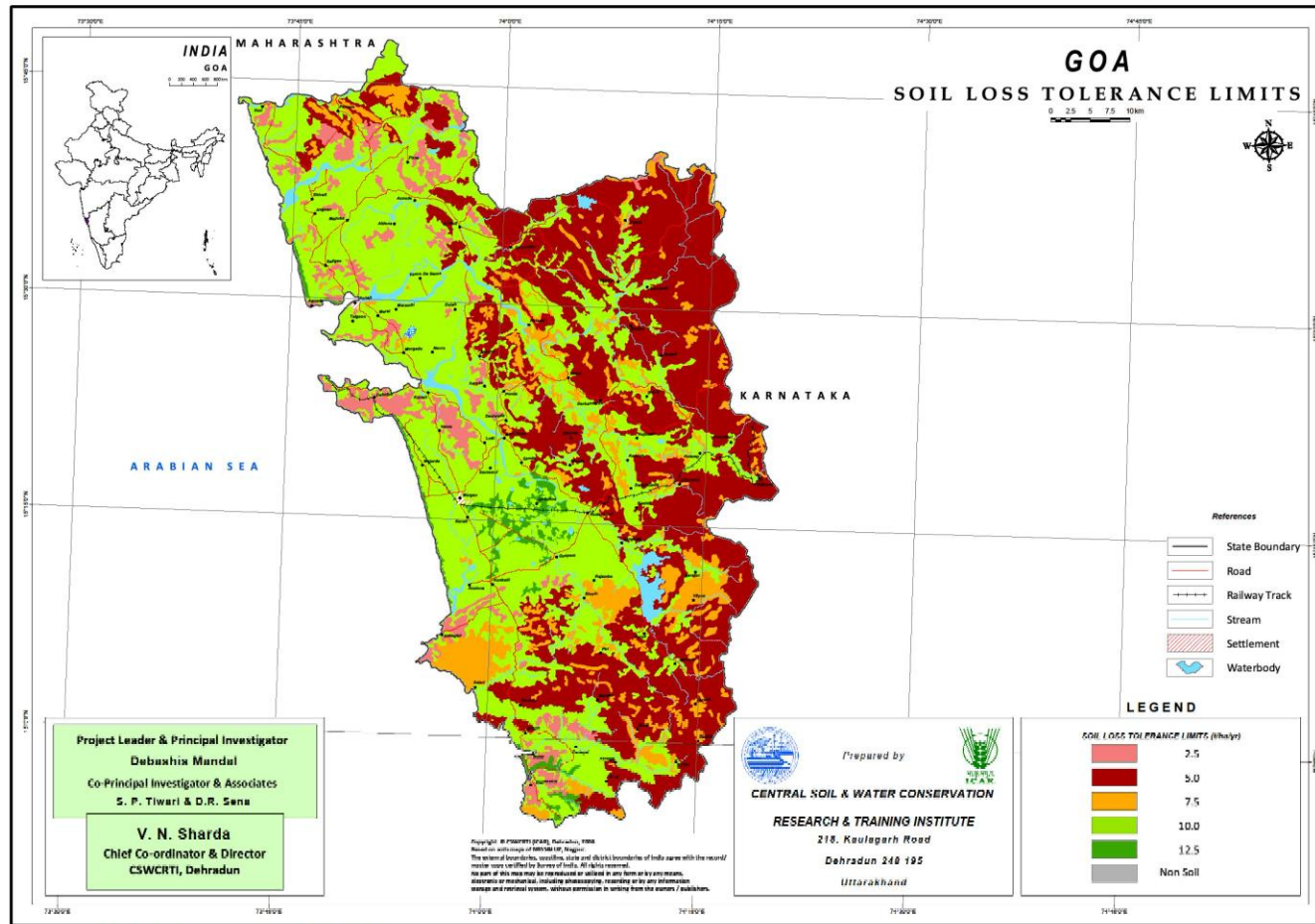


# SLTL MAP OF GOA



Districts	Area (M ha)	Soil depth (cm)	SLTL (Mg ha <sup>-1</sup> yr <sup>-1</sup> )
Pardez, Bicholim, Tiswadi (W), Ponda (W), Mormugao (W-E), Salcette (N) and Canacona (S)	0.02 (5.41)	<25	2.5
Pernem (N), Bicholim, Satari, Ponda (N_S), Canacona (E&W), Qupepem (S) and Sanguem (E&S)	0.14 (37.84)	25-50	5
Pernem (N), Bicholim, Satari (N&W), Ponda, Canacona (N&S), Qupepem (E) and Sanguem	0.03 (8.11)	50-100	7.5
Pernem, Bardez, Bicholim (N&S), Tiswadi, Satari (E&W), Ponda (E&W), Mormugao (N&S), Salcette, Canacona, Qupepem and Sanguem (N)	0.16 (43.24)	100-150	10
Bardez, Mormugao (S), Salcette (E&S), Canacona(S) and Qupepem (N)	0.01 (2.70)	>150	12.5
Rock out crop/ unreported area	0.01 (2.70)	-	-

