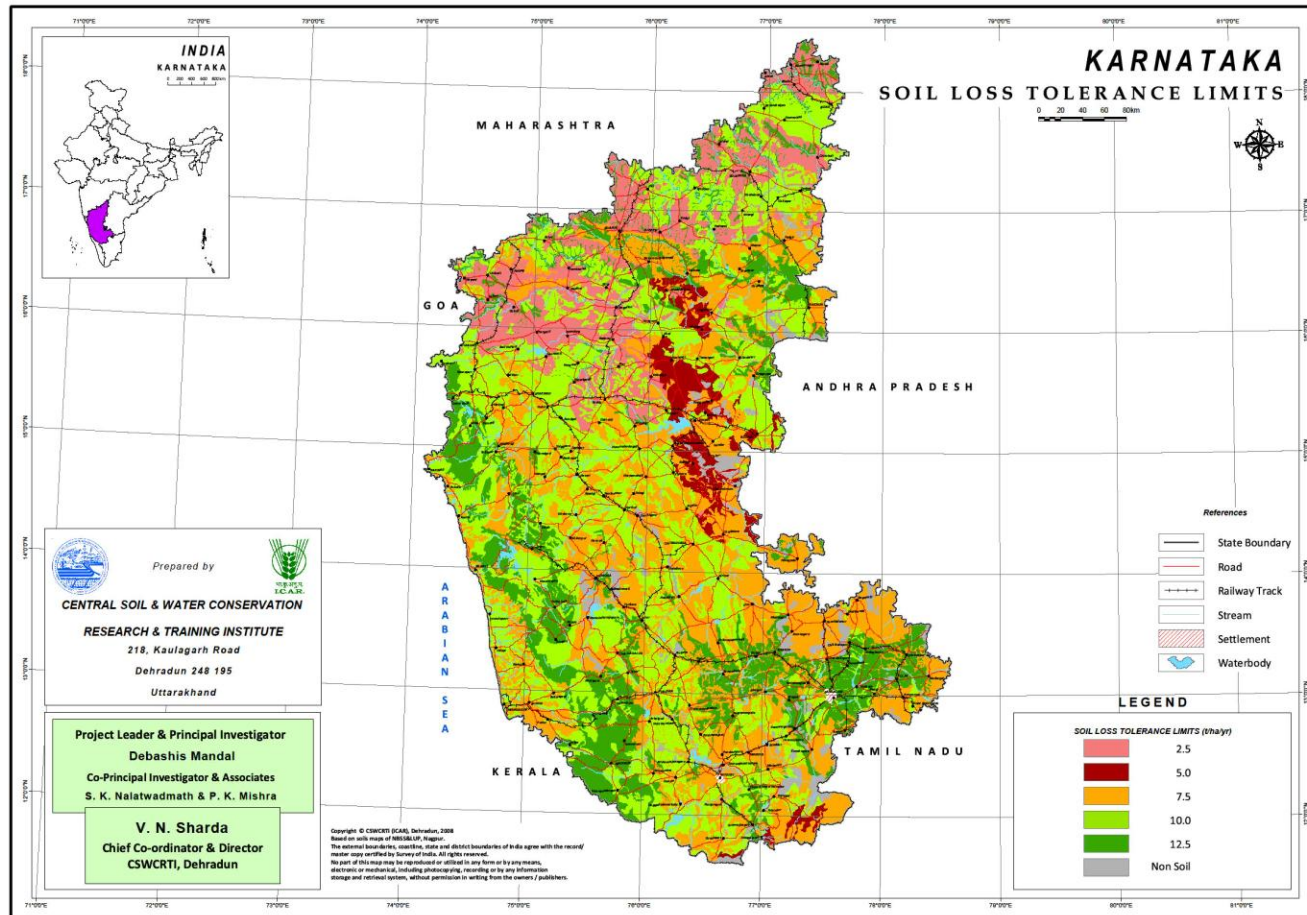


SLTL MAP OF KARNATAKA



Districts	Area (M ha)	Soil depth (cm)	SLTL (Mg ha ⁻¹ yr ⁻¹)
Bidar (N), Gulbarga (N), Bijapur (S), Raichur, Belgaum (C), Bagalkot, Koppal (S), Gadag (C) and Dharwar	2.12 (11.06)		2.5
Raichur, Koppal (NE), Bellary (S) and Chitradurga (N)	0.63 (3.29)	25-50	5
Gulbarga (E), Bijapur, Raichur (NW), Belgaum (N), Bagalkot, Koppal, Bellary (C), Gadag, Dharwar, Uttar Kannad (E), Haveri, Davangere, Shimoga, Chitradurga (scattered), Udupi (C), Chikmagalur (W), Tumkur (N), Hasaan (scattered), Dakshin Kannad (S), Kolar (N), Kodagu (E), Mandya (S), Bangalore (W) and Chamrajnagar (S)	5.67 (29.58)	25-100	7.5
Bidar (S), Gulbarga (S), Bijapur (N), Raichur (SE), Belgaum(S), Bagalkot, Koppal, Bellary (E), Gadag, Dharwar (E), Uttar Kannad (N), Haveri Davangere, Shimoga (scattered), Chitradurga (S), Udupi (W), Chikmagalur (N), Tumkur, Hasaan, Dakshin Kannad (Scattered), Kolar, Kodagu (S), Mandya (W), Bangalore and Chamrajnagar	6.42 (33.49)	100-150	10
Bidar, Gulbarga, Bijapur, Raichur, Belgaum, Bellary, Gadag, Dharwar, Uttar Kannad (W), Shimoga, Udupi(E), Chikmagalur (E), Tumkur (scattered), Hasaan (scattered), Dakshin Kannad (E), Kelar (C), Kodagu (W), Mandya (C), Bangalore (E) and Chamrajnagar	3.56 (18.57)	>150	12.5
Rock outcrop/ unreported area	0.77 (4.01)	-	-

