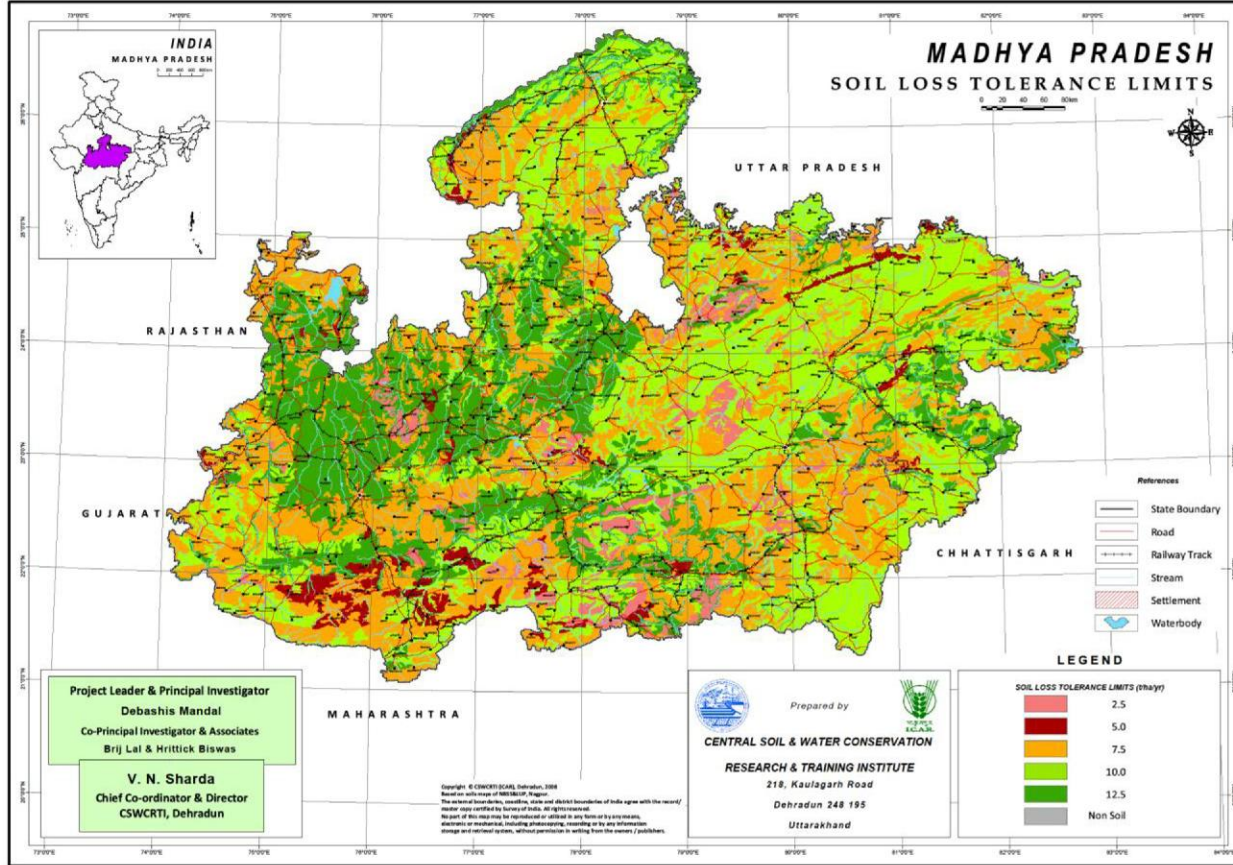


SLTL MAP OF MADHYA PRADESH



| Districts | Area (M ha) | Soil depth (cm) | SLTL ($Mg\ ha^{-1}\ yr^{-1}$) |
|---|---------------|-----------------|---------------------------------|
| Sagar (N&S), Shajapur (C), Raisen (C), Hoshangabad (S), Betul, Chhindwara (E-S), Damoh (S), Chhatarpur (S) and Seoni (C). | 1.26 (4.09) | | 2.5 |
| Sheopur (W-S), West Nimar (C), East Nimar ©, Harda (C) Chhindwara (C&S), Panna (E-W), Santna (N) and Umaria€. | 0.95 (3.08) | 25-100 | 5 |
| Bhind (C-W), Gwalior ©, Datia (S), Sheopur, Shivpuri (N-S),Guna (E&W), Sagar (N&S), Vidisha, Rajgarh (N), Bhopal (E&S), Shajapur ©, Ratlam (W-S), Jhabua, Badwani, Dhar (S&W),Ujjain ©, Indore (S), West Nimar (S), East Nimar, Harda (S), Dewas (S), Sehore (E-W), Raisen (E-W), Betul (E-S), Narimhapur (N-S), Chhindwara (C&S), Damoh (E&S), Tikamgarh, Chhatarpur, Panna (N), Satna (N), Rewa (E-S), Sidhi, Shahdol, Dindori, Umaria (N&S), Katni (N&S), Jabalpur (E-S), Mandla (S-W) and Seoni | 10.06 (32.66) | 25-150 | 7.5 |
| Morena, Bhind, Gwalior, Datia, Sheopur (N&S), Shivpuri (N), Guna, Sagar, Vidisha (E&W), Rajgarh (N-E), Jhabua, Badwani, Dhar (S), West Nimar (N-W), East Nimar (C&S), Harda, Dewas €, Betul ©, Raisen, Hoshangabad €, Betul ©, Narsimhapur, Chhindwara, Damoh, Tikamgarh (N-E), Chhatarpur (N), Panna, Satna, Rewa, Sidhi (E&S), Shahdol (S-W), Dindori (S-E), Umaria, Katni, Jabalpur (N-W), Mandla, Balaghat and Seono | 10.60 (34.40) | 75-100 | 10 |
| Morena (N-W), Bhind (N-E), Datia €, Sheopur (N&S), Guna (N&S), Sagar (W), Vidisha (N-S), Rajgarh, (Bhopal (N&W), Shajapur, Neemach (S), Mandsaur, Ratlam (N-E), Dhar (E&S), Ujjain, Indore, West Nimar (N), East Nimar (N), Harda (W), Dewas (N), Sehore (N&S), Raisen (N&S), Hoshangabad (W), Betul (N), Chhindwara, Sidhi (N&S) and Shahdol (N-E) | 7.62 (24.73) | 100-150 | 12.5 |
| Rock outcrop/ unreported areas | 0.32 (1.04) | - | - |

