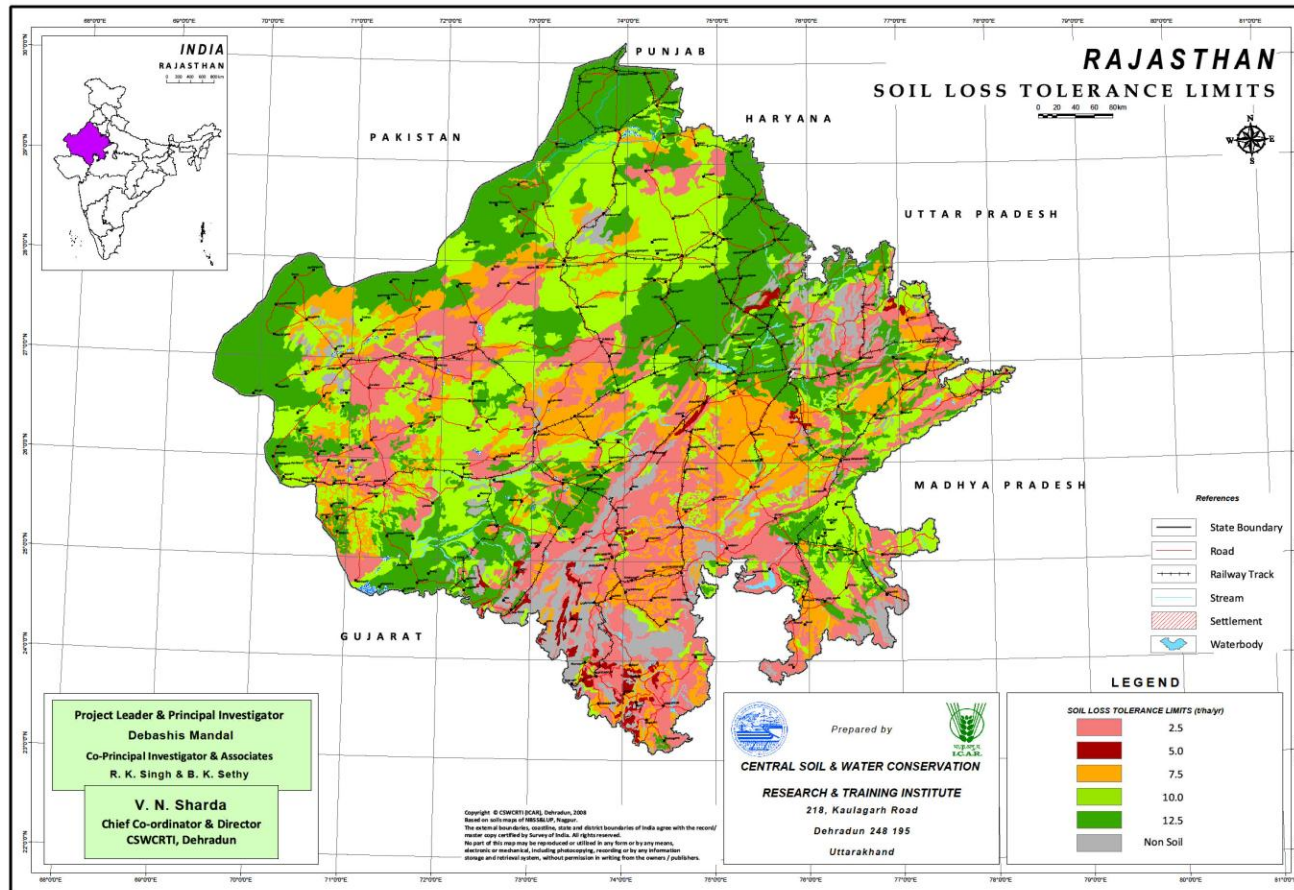


SLTL MAP OF RAJASTHAN



Districts	Area (M ha)	Soil depth (cm)	SLTL (Mg ha ⁻¹ yr ⁻¹)
Bikaner (S), Churu, Sikar, Jaipur, Alwar (SW), Bharatpur, Dholpur @, Karoli, Dausa, Sawaimadhopur, Bhundi (S), Baran €, Jhalawar(W), Kota (S), Bhiwara, Chittorgarh (S), Banswara, Dungarpur, Udaipur, Sirohi, Pali, Ajmer, Nagaur, Rajsamand, Barmer (N), Jodhpur (S) and Jaisalmer	7.61 (22.24)	Oct-50	2.5
Sikar, Bharatpur, Tonk, Banswara, Dungarpur, Udaipur, Sirohi, Ajmer, Rajsamand and Jalore	0.37 (1.08)	50-75	5
Hanumangarh, Bikaner (S), Churu, Alwar (SW), Bharatpur, Dholpur @, Karoli, Dausa, Sawaimadhopur, Tonk €, Bundi (S), Baran €, Jhalawar@, Bhilwara, Chittorgarh (S), Banswara, Dungarpur, Udaipur, Sirohi, Pali, Ajmer, Nagaur, Rajsamand, Jalore, Barmer, Jodhpur (E) and Jaisalmer	4.98 (14.56)	50-100	7.5
Hanumangrah @, Jhunjunu, Bikaner €, Churu, Sikar, Jaipur, Alwar Bharatpur, Dholpur (N), Karoli, Dausa, Sawaimadhopur, Tonk, Bundi, Baran (NW), Jhalawar (N), Kota €, Bhiwara, Chittorgarh, Dungarpur, Pali, Ajmer, Nagaur, Rajsamand, Jalore, Barmer, Jodhpur (E) and Jaisalmer	8.84 (25.84)	75-100	10
Ganganagar, Hanumangarh (N-S), Jhunjunu €, Bikaner (W), Churu Sikar, Jaipur (SW), Alwar (SW), Bharatpur, Dholpur@, Karoli, Dausa, Sawaimadhopur, Tonk, Bundi, Baran €, Jhalawar (W), Kota @, Bhilwara, Banswara, Sirohi (W), Pali, Ajmer, Nagaur, Jalore (S), Barmer, Jodhpur (E) and Jaisalmer	9.82 (28.71)	>100	12.5
Rock outcrop/ unreported area	2.59 (7.57)	-	-

