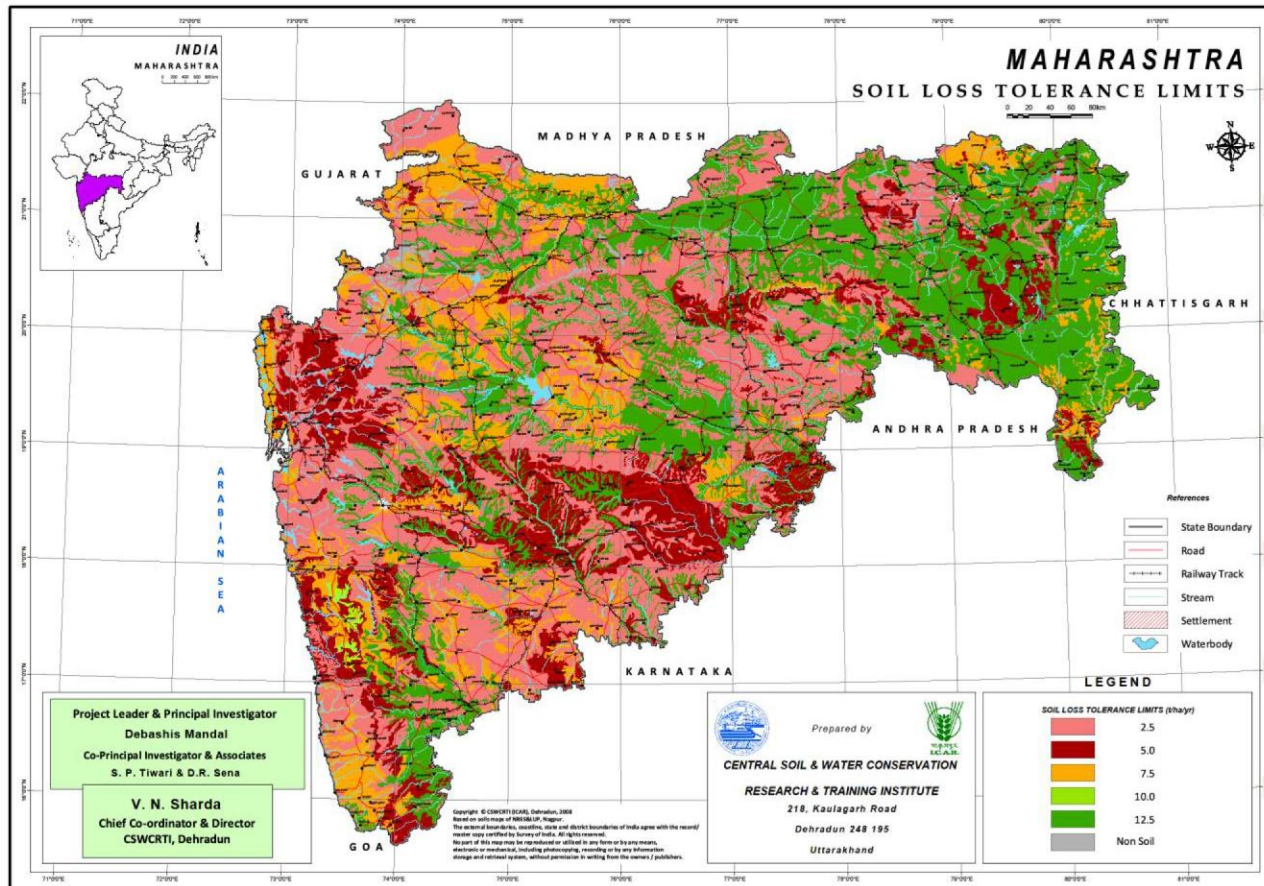


SLTL MAP OF MAHARASHTRA



Districts	Area (M ha)	Soil depth (cm)	SLTL (Mg ha ⁻¹ yr ⁻¹)
Gondia, Bhandara, Chandrapur, Nagpur (W), Wardha (N-E), Amravati (N), Yavatmal (S), Nanded (N), Akola (S), Washim, Hingoli (N), Latur, Parbhani (N), Dhule (S), Jalgaon @, Jalna, Aurangabad, Bid, Dharashi, Solapur, Sangli (N), Kolhapur, Sindhudurg (N), Ratnagiri (C), Raigarh (N), Satara, Pune (W), Ahmadanagr, Thane and Nasik	10.77 (35.0)	<10-75	2.5
Gadchiroli, Bhandara, Chandrapur, Nagpur, Wardha @, Yavatmal (S), Nanded (S), Washim, Hingoli @, Latur, Buldhana (S), Nandurbar @, Jalna Bid, Dharashi, Solapur, Sanli, Kolhapur, Sindhudurg, Ratnagiri (N0, Raigarh, Satara Pune, Ahmadnagar, Thane and Nashik,	4.36 (14.16)	25-50	5
Gondia, Gadchiroli, Bhandara, Chandrapur, Nagpur (N), Washim, Latur, Buldhana @, Nandurbar (S), Dhule (N), Jalgaon (N), Jalna, Aurangabad Bid, Solapur, Sangli, Kolhapur, Sindhudurg, Ratnagiri (N), Raigarh, Satara, Pune, Ahmadnagar, Thnae and Nashik	4.57 (14.85)	10-100	7.5
Ratnagiri and Raigarh	0.08 (0.26)	75-100	10
Gondia €, Gadchiroli (W), Bhandara, Chandrapur €, Nagpur @, Wardha (S), Amravati (S), Yavatmal €, Nanded €, Akola €, Washim, Hingoli (S), Latur, Parbhani(S), Buldhana (N), Dhule €, Jalgaon (S), Jalna, Aurangabad, Bid, Dharashi, Solapur, Sangli (S), Kolhapur (S), Sindhudurg, Raigarh, Satara, Pune, Ahmadnagar and Nashik	10.24 (33.27)	>100	12.5
Rock outcrop/ unreported area	0.75 (2.43)	-	-

