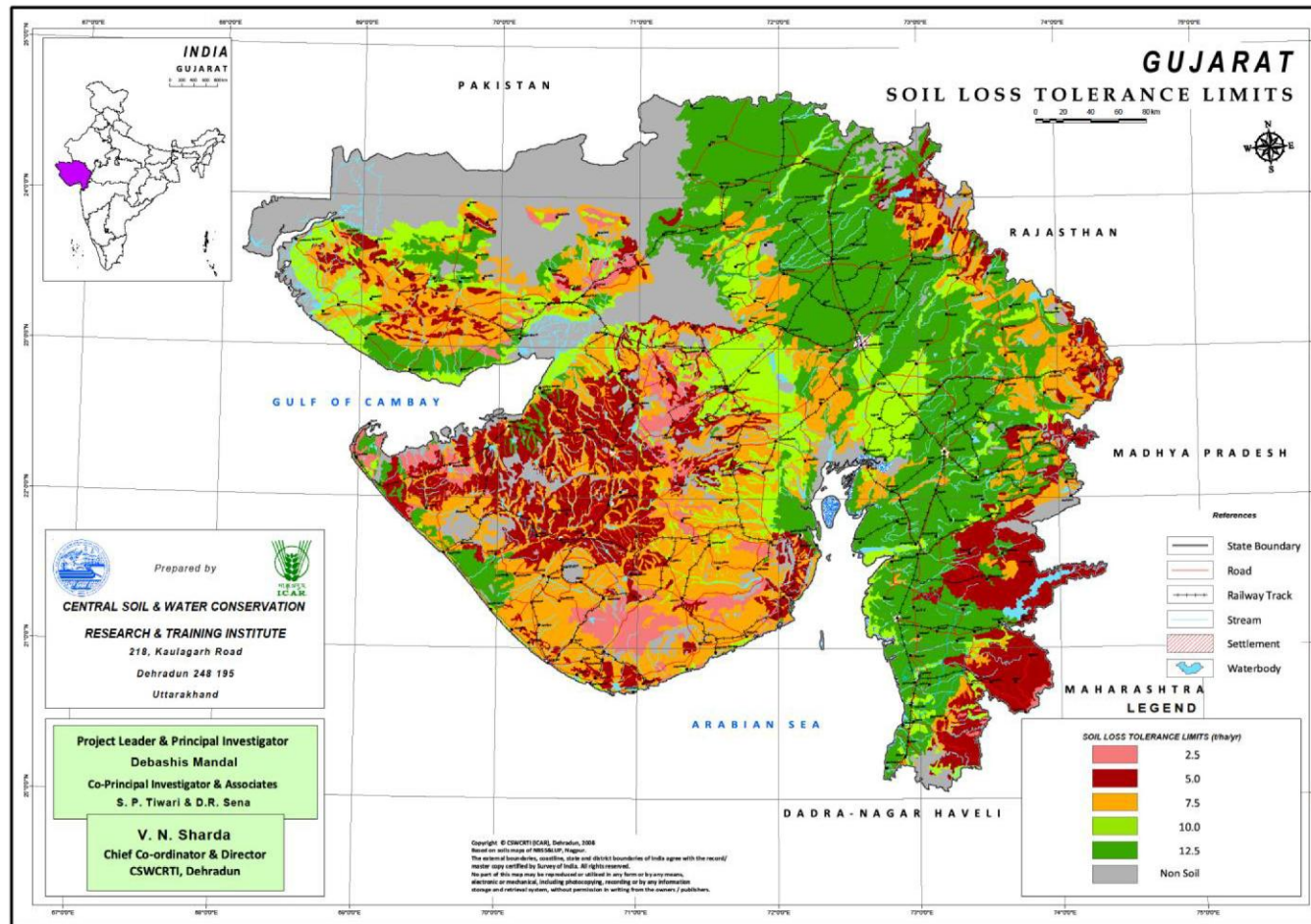


SLTL MAP OF GUJARAT



Districts	Area (M ha)	Soil depth (cm)	SLTL (Mg ha ⁻¹ yr ⁻¹)
Kachchh (E&S), The Dangs (E), Valsad (E), Surendra Nagar (W), Bhavnagar (S), Amreli(S), Junagadh (S), Jamnagar (N) and Rajkot (E)	0.67 (3.42)	<25	2.5
Kachchh, Mahesana (N), Sabarkantha (N), Dahod (E), Vadodara (E), Bharuch (E), Rajpipla, Surat (E&C), Navsari (E), The Dangs, Valsad (E), Surendra Nagar (W), Bhavnagar (E), Amreli (N), Junagadh (N&S), Porbandar (E), Jamnagar and Rajkot	2.85 (14.53)	25-50	5
Rann of Kachchh, Kachchh, Patan, Sabarkantha(N), Dahod, Panchmahal(N), Anand (S), Vadodra (E), Bharuch (N), Navsari (E), The Dangs (N-W), Valsad (N), Ahmedabad (S-W), Surendra Nagar (N&S), Bhavnagar, Amreli, Junagadh, Porbandar (S), Jamnagar and Rajkot	4.27 (21.77)	50-100	7.5
Kachchh (N&W), Banaskantha(N-E), Patan (S), Sabarkantha (N), Dahod (N&S), Kheda (S), Anand, Vadodra, Bharuch (S), Surat (W), Navsari (E&C), The dangs (N-W), Valsad, Ahmedabad (C&S), Surendra Nagar (E), Bhavnagar(N) and Rajkot (N)	2.18 (11.12)	50-150	10
Kachchh (N&S), Banaskantha PatanMahesana, Gandhinagar Sabarkantha(S) Dahod (N&S), Panchmahal, Kheda (N), Anand(N-E), Vadodra, Bharuch Rajpipla (N&C), Surat, Navsari Valsad(N-W), Ahmedabad (N) Bhavnagar(N) and Porbandar	5.28 (26.93)	>150	12.5
Rock outcrop/unreported area	4.36 (22.23)	-	-

