

# ARUNACHAL PRADESH PRIORITY CLASSES FOR EROSION CONTROL

92°0'0"E

94°0'0"E

96°0'0"E

98°0'0"E

30°0'0"N

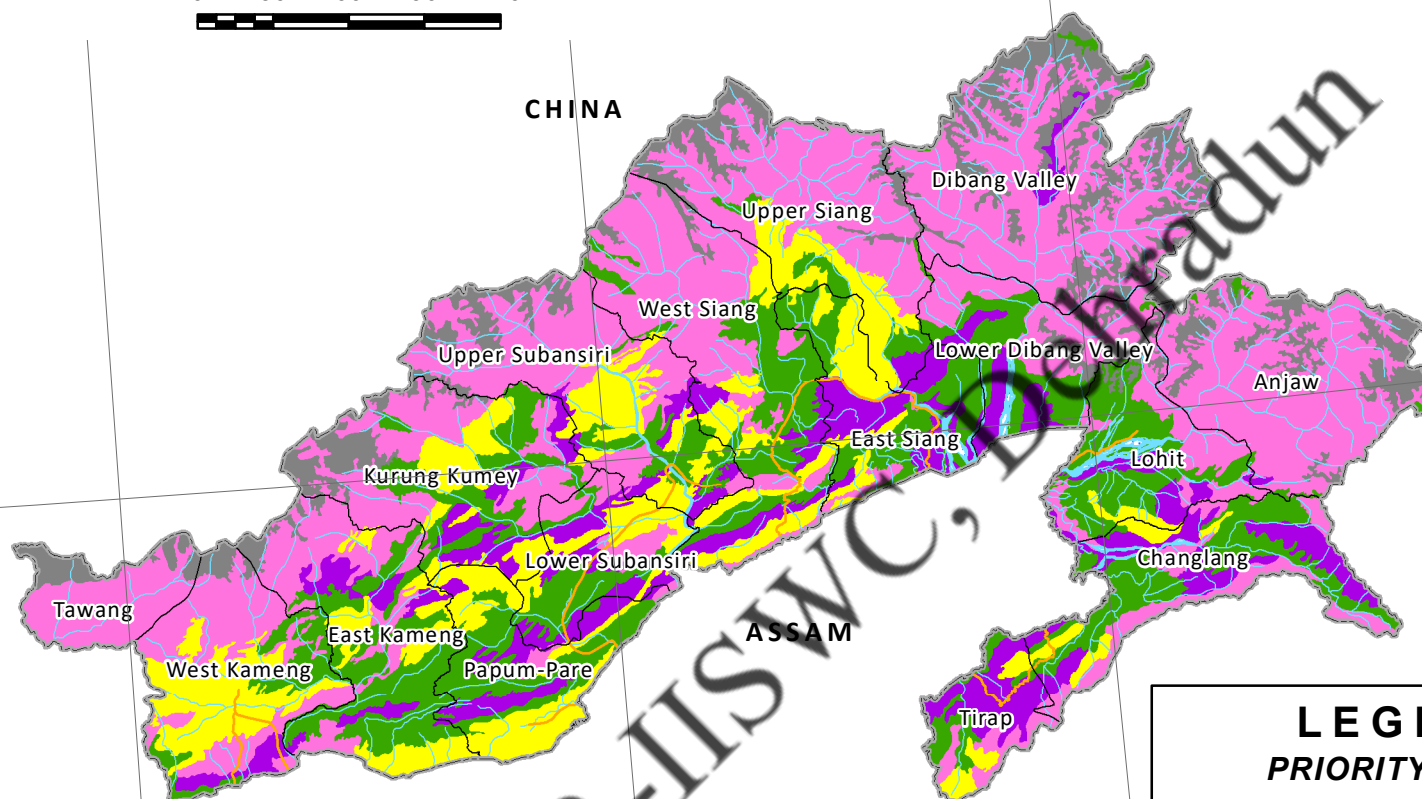
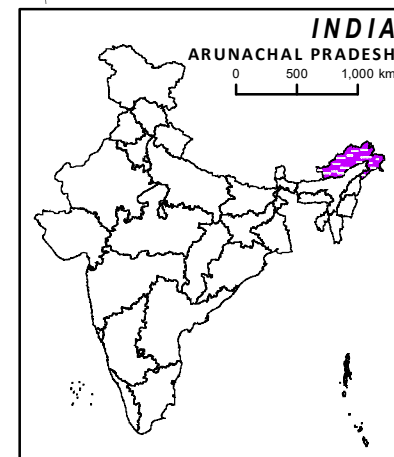
28°0'0"N

26°0'0"N

28°0'0"N

26°0'0"N

0 30 60 90 120 km



CHINA

ASSAM

NAGALAND

## References

	State Boundary		Settlement
	District Boundary		Waterbody
	Road		River Sand/ Sand Bar
	Railway Track		Stream

## LEGEND PRIORITY CLASS

	CLASS - 1 ( $> 35 \text{ t ha}^{-1} \text{ yr}^{-1}$ )
	CLASS - 2 ( $25 - 35 \text{ t ha}^{-1} \text{ yr}^{-1}$ )
	CLASS - 3 ( $15 - 25 \text{ t ha}^{-1} \text{ yr}^{-1}$ )
	CLASS - 4 ( $5 - 15 \text{ t ha}^{-1} \text{ yr}^{-1}$ )
	CLASS - 5 ( $0 - 5 \text{ t ha}^{-1} \text{ yr}^{-1}$ )
	CLASS - 6 NO TREATMENT
	CLASS - 7 Non Soil
	Not Mapped

92°0'0"E

94°0'0"E

96°0'0"E

98°0'0"E