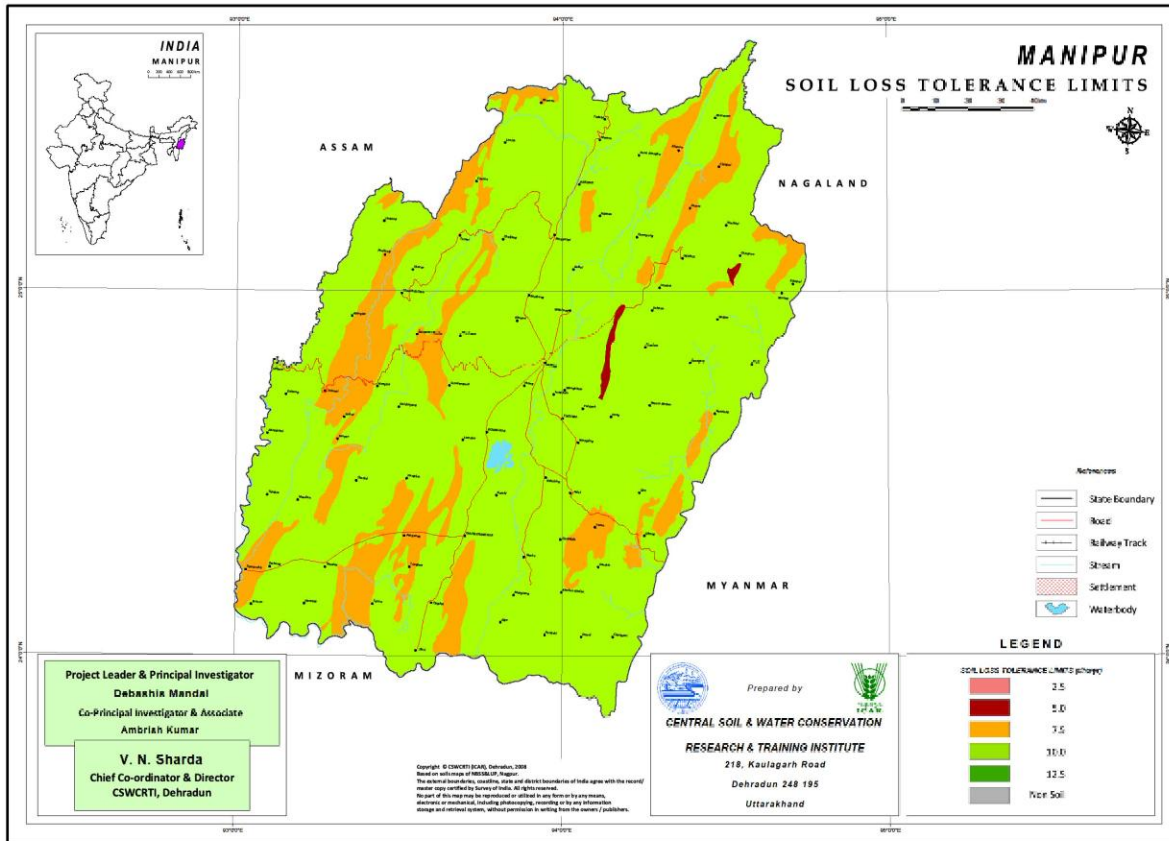


SLTL MAP OF MANIPUR



Districts	Area (M ha)	Soil depth (cm)	SLTL (Mg ha ⁻¹ yr ⁻¹)
Ukhrul (N)	0.01 (0.45)	25-50	5
Ukhrul (E&N), Senapati (N) Bishnupur (S), Chandel €, Churachandpur (S) and Tamenglong (N-S)	0.35 (15.70)	50-100	7.5
Ukhrul, Senapati, Imphal West, Imphal East, Thoubal, Bishnupur, Chandel, Churachandpur and Tamenglong	1.86 (83.40)	100	10
Rock outcrop/ unreported area	0.01 (0.45)	-	-

